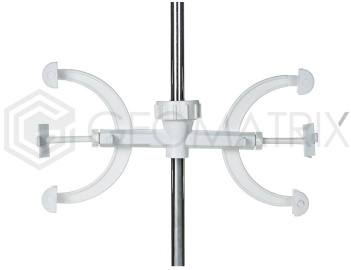


No image found for product type unknown

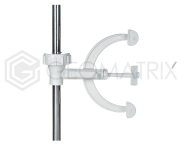
## Fisher Clamp

**Sku :** GE6101



[www.geomatrixlabs.com](http://www.geomatrixlabs.com)

### Product Image Gallery



[www.geomatrixlabs.com](http://www.geomatrixlabs.com)

### Description

Burette clamps are designed to securely hold burettes, test tubes, and more. They are completely corrosion-proof, molded from polypropylene. The spring-loaded jack in the middle ensures a tight grip on the burette, preventing slippage. Two tapered wedges are included for a firm hold on rods. Available in both single and double clamp options.