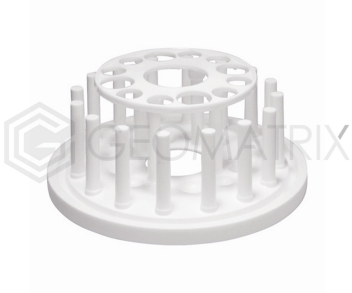


No image found type unknown

## Test Tube stand Round

**Sku :** GE6374



[www.geomatrixlabs.com](http://www.geomatrixlabs.com)

### Description

This circular polypropylene test tube holder holds twelve tubes and is useful for saving space. Its top plate contains eight 19 mm holes and four 25 mm holes. The base includes 16 vertical pegs for drying tubes and corresponding hemispherical wells, and it is encircled by a trough to capture drips.